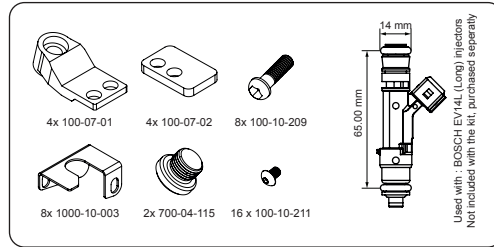


## Installation instructions

The 120-10-101 GM 8cyl LS1, LS2, LS3, L36, L99 fuel rail can be configured in two distinct styles depending on the intended intake manifold. To simplify, we refer to them as "LS1 style" and "LS3 style." Based on the intake design being used, follow the instructions on the next page to assemble the fuel rail brackets with the included hardware to match the intake.

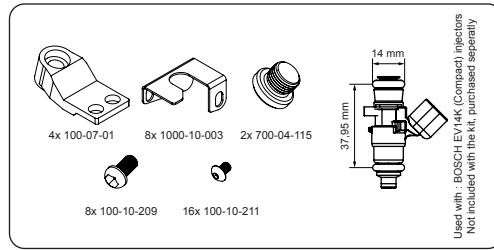
### Fuel rail assembly for LS1 type

The LS1 intake setup is designed for use with Bosch EV14L (Long) 65mm style injectors. The fuel rail does not come with injectors, which must be purchased separately. When installing the injectors with the safety clips, ensure that you do not tighten the clip screws until after the fuel rail is secured to the inlet. The safety clips are designed to lock the injectors in place securely, not to position them.



### Fuel rail assembly for LS3 type

The LS3 intake setup is designed for Bosch EV14K (Compact) 37.95mm style injectors. As with the LS1 setup, injectors are not included and must be purchased separately. When installing the injectors with the safety clips, ensure that you do not tighten the clip screws until after the fuel rail is secured to the inlet. The safety clips are designed to lock the injectors in place securely, not to position them.



### O-rings and hardware

Ensure that all injector O-rings and fitting threads are lubricated during assembly, and pressurize the system before starting the engine to verify that the assembly is correct and all connections are sufficiently tightened.

The kit does not include the bolts required to attach the provided brackets to the intake manifold. For most manifolds, OEM bolts can be used.

### Injector safety clips

The 120-10-101 GM 8cyl LS1, LS2, LS3, L36, L99 fuel rail is equipped with unique injector safety clips\*, which ensure that the injectors remain securely attached to the fuel rail under all conditions, even in the event of an accident where the fuel rail could be torn from the intake. Securing the injectors to the fuel rail is critical to prevent fuel leakage from the injector ports during an accident and to prevent the fuel rail from lifting or leaking under high fuel pressure in demanding motorsport conditions. This precaution significantly reduces the risk of a catastrophic fire during racing.

\*The key difference between standard Bosch injector clips and the Nuke Performance safety clips is that the Nuke Performance clips are mounted directly into the fuel rail profile using dual M4 bolts, offering superior durability and long-term security.

### AN-8 ORB Full Flow Fuel rail specifications

<b>Injector type specification</b>	Bosch EV14-style injector *	<b>Length</b>	374.00 mm (14.72") / each
<b>End inlet / outlet threads</b>	2 x AN-8 ORB	<b>Height</b>	32.0 mm (1.26")
<b>Side inlet / outlet thread</b>	1 x AN-6 ORB	<b>CC in between injectors</b>	4 x 110mm (4 x 4.33")
<b>Internal bore</b>	18.0 mm (0.69")	<b>Fuel compatibility</b>	Petrol, Gasoline, Ethanol, E85, Methanol
<b>Width</b>	23.0 mm (0.90")	<b>For motorsports use</b>	YES

\* Specified injectors for LS1 type and LS3 type intakes found on next page assembly instructions



FEKÄKTIG INSTALLATION KÄN ORSAKA ALLVAR-  
LIGA SKADOR PÅ PRODUKT OCH FORDON, SOM  
LÄGGAS SAMMAN I EN PRODUKT OCH MOTOR-  
SÄTTES SAM. INFORMATION SÄND UMFÖLLE  
SÄCH- OCH PERSONSÄKSHÄDEN MÖJLIGT.  
DER ENBAU DARF NUR DURCH GESCHULTES  
FACHPERSONAL MIT DER NOTWENDIGEN  
SICHERHEITSANSTEUERUNG ERFOGEN. DER  
HERSTELLER HÄFTET NICHT FÜR SCHÄDEN.  
DURCH NICHT FACHGERECHTE MONTAGE.

UNE INSTALLATION NON CONFORME PEUT PRO-  
VOQUER DES DOMMAGES SÉRIEUX SUR LE PRO-  
DUIT ET LE VÉHICULE, PAR CONSÉQUENT, DES  
ACCIDENTS, DES DÉGÂTS MATÉRIELS ET DES  
BLESSURES CORPORELLES SONT POSSIBLES.  
L'INSTALLATION DOIT UNIFORMÉMENT ÊTRE  
EFFECTUÉE PAR DES EXPERTS, ASSUREZ-VOUS  
DE TOUJOURS UTILISER TOUTS LES ÉQUIPE-  
MENTS DE SÉCURITÉ NECESSAIRES. LE FABRI-  
CANT NE PEUT ÊTRE TENUE POUR RESPONSABLE  
EN CAS D'INSTALLATION NON CONFORME.

UNA INSTALACION INCORRECTA PUEDE  
CAUSAR SERIOS DAÑOS TANTO AL PRODUCTO  
COMO AL VEHICULO, COMO CONSECUENCIA  
ES PROBABLE QUE SE PRESENTEN ACCIDENTES,  
DAÑOS MATERIALES Y LESIONES FISICAS.  
NUNCA SE DEBE SER REALIZADA POR EXPERTOS, CERCIORESE DE UTILI-  
ZAR SIEMPRE TODO EL EQUIPO DE SEGURIDAD  
NECESARIO. EL FABRICANTE NO SE HACE RE-  
SPONSABLE DE LOS DAÑOS CAUSADOS POR  
UNA INSTALACION INCORRECTA.

SCHWERE SCHADEFÄHIGKEIT AN PRODUKT UND MOTOR  
KÖNNEN BEI UNSACHGEMÄßER INSTALLATION  
ENTSTEHEN. INFORMATIONEN SIND UMFÖLLE  
SACH- UND PERSONENSCHÄDEN MÖGLICH.  
DER ENBAU DARF NUR DURCH GESCHULTES  
FACHPERSONAL MIT DER NOTWENDIGEN  
SICHERHEITSANSTEUERUNG ERFOGEN. DER  
HERSTELLER HÄFTET NICHT FÜR SCHÄDEN.  
DURCH NICHT FACHGERECHTE MONTAGE.

INCORRECT INSTALLATION CAN CAUSE SERIO-  
US DAMAGE TO THE PRODUCT AND VEHICLE.  
AND PERSONAL INJURY ARE POSSIBLE. DAMAGE  
PARTS. MAKE SURE TO ALWAYS USE ALL NE-  
CESSARY SAFETY EQUIPMENT. THE MANU-  
FACTURER IS NOT LIABLE FOR DAMAGE  
CAUSED BY IMPROPER INSTALLATION.

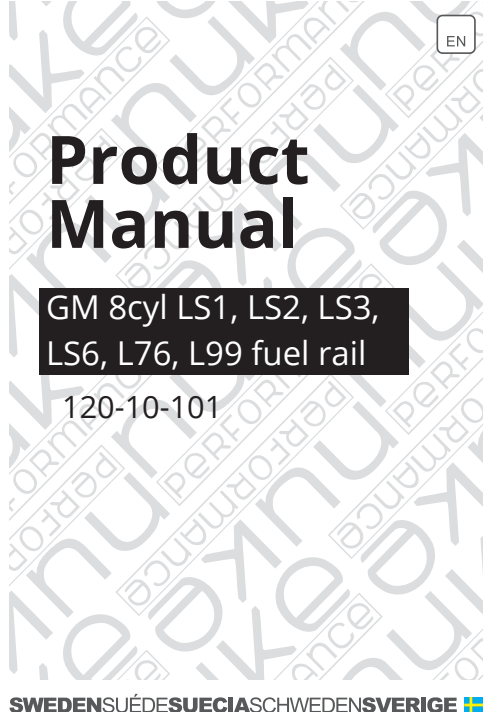
/nukeperformance  
 #nukeperformance  
 /nukeperformance

### Information :

For more information about our brand, our products, our history, our dealers, our conditions and technical documentation, visit [www.nukeperformance.com](http://www.nukeperformance.com) or contact your local dealer. This product is developed, designed and manufactured in-house by Nuke Performance AB in Sweden. Make sure to use lubricant before tightening fittings and always use extra care when handling any kind of fuel. All of our products are installed at your own risk and could damage your equipment, engine or vehicle if not properly installed.

© Nuke Performance AB, Sweden  
[www.nukeperformance.com](http://www.nukeperformance.com)

Safety disclaimer



EN

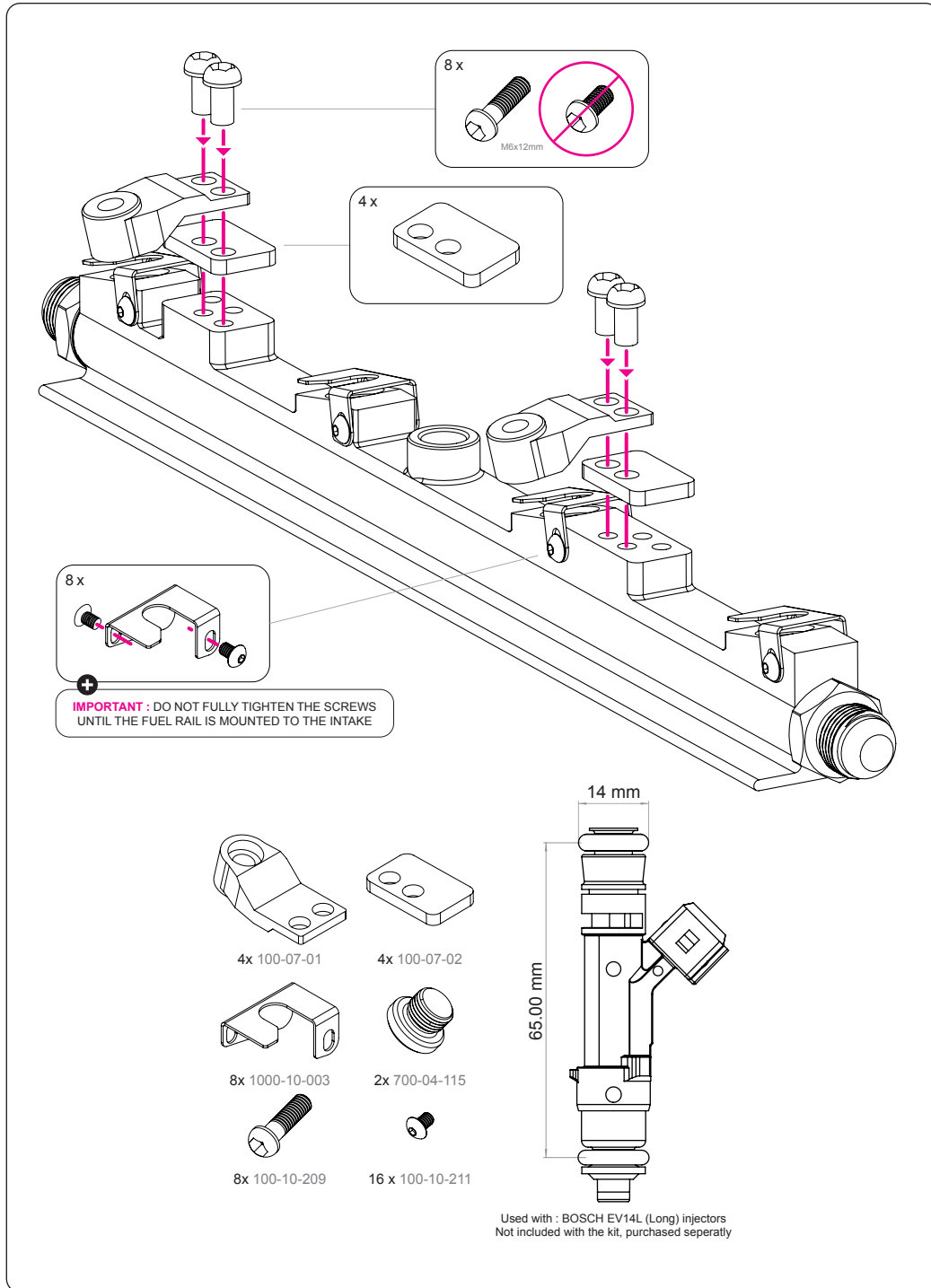
# Product Manual

GM 8cyl LS1, LS2, LS3,  
LS6, L76, L99 fuel rail

120-10-101

SWEDENSUÉDESUECIASCHWEDENSVERIGE

## Fuel rail assembly for LS1 type manifold



## Fuel rail assembly for LS3 type manifold

